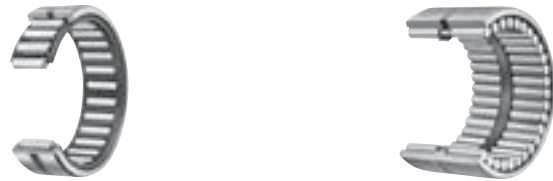


**MACHINED TYPE NEEDLE ROLLER BEARINGS**

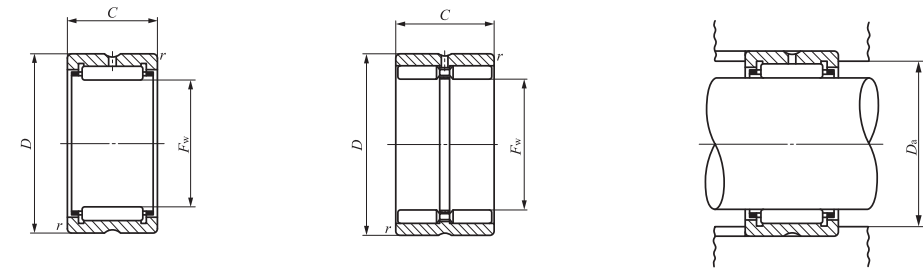
Without Inner Ring



Shaft dia. 16 – 22mm

Shaft dia. mm	Identification number						Mass (Ref.) g
	RNA 49	RNA 69	RNA 48	TAF	TR	GTR	
16	<b>RNA 4901</b>	—	—	—	—	—	18.1
	—	—	—	<b>TAF 162416</b>	—	—	23
	—	—	—	<b>TAF 162420</b>	—	—	29
	—	<b>RNA 6901</b>	—	—	—	—	30
17	—	—	—	<b>TAF 172516</b>	—	—	24.5
	—	—	—	<b>TAF 172520</b>	—	—	30.5
18	<b>RNA 49/14</b>	—	—	—	—	—	19.9
	—	—	—	<b>TAF 182616</b>	—	—	25.5
	—	—	—	<b>TAF 182620</b>	—	—	32
19	—	—	—	<b>TAF 192716</b>	—	—	27
	—	—	—	<b>TAF 192720</b>	—	—	34
20	<b>RNA 4902</b>	—	—	—	—	—	21.5
	—	—	—	<b>TAF 202816</b>	—	—	27.5
	—	—	—	<b>TAF 202820</b>	—	—	35.5
	—	<b>RNA 6902</b>	—	—	—	—	37
	—	—	—	—	<b>TR 203320</b>	—	59.5
	—	—	—	—	—	<b>GTR 203320</b>	69
21	—	—	—	<b>TAF 212916</b>	—	—	29
	—	—	—	<b>TAF 212920</b>	—	—	36
22	<b>RNA 4903</b>	—	—	—	—	—	23.5
	—	—	—	<b>TAF 223016</b>	—	—	30
	—	—	—	<b>TAF 223020</b>	—	—	37.5
	—	<b>RNA 6903</b>	—	—	—	—	40.5
	—	—	—	—	<b>TR 223425</b>	—	73.5
—	—	—	—	—	<b>GTR 223425</b>	87	

Notes<sup>(1)</sup> Minimum allowable value of chamfer dimension  $r$   
<sup>(2)</sup> Allowable rotational speed applies to oil lubrication. For grease lubrication, a maximum of 60% of this value is allowable.  
 Remarks1. TAF series with a roller set bore diameter  $F_w$  of 26 mm or less have no oil hole. In others, the outer ring has an oil groove and an oil hole.  
 2. No grease is prepacked. Perform proper lubrication.



RNA49 TAF TR  
RNA69 ( $F_w \leq 35$ )

GTR

$F_w$	Boundary dimensions mm			Standard mounting dimension $D_a$ Max. mm	Basic dynamic load rating $C$ N	Basic static load rating $C_0$ N	Allowable rotational speed <sup>(2)</sup> min <sup>-1</sup>
	$D$	$C$	$r_{s \min}^{(1)}$				
16	24	13	0.3	22	9 660	11 100	25 000
16	24	16	0.3	22	12 300	15 100	25 000
16	24	20	0.3	22	15 500	20 400	25 000
16	24	22	0.3	22	17 100	23 000	25 000
17	25	16	0.3	23	12 900	16 300	25 000
17	25	20	0.3	23	16 300	22 000	25 000
18	26	13	0.3	24	10 600	12 800	20 000
18	26	16	0.3	24	13 400	17 500	20 000
18	26	20	0.3	24	17 000	23 600	20 000
19	27	16	0.3	25	14 000	18 700	20 000
19	27	20	0.3	25	17 700	25 300	20 000
20	28	13	0.3	26	10 900	13 800	20 000
20	28	16	0.3	26	13 900	18 800	20 000
20	28	20	0.3	26	17 600	25 400	20 000
20	28	23	0.3	26	19 300	28 800	20 000
20	33	20	0.3	31	24 300	26 500	20 000
20	33	20	0.3	31	29 200	37 200	7 500
21	29	16	0.3	27	14 400	20 000	19 000
21	29	20	0.3	27	18 200	27 100	19 000
22	30	13	0.3	28	11 700	15 600	18 000
22	30	16	0.3	28	14 900	21 200	18 000
22	30	20	0.3	28	18 900	28 700	18 000
22	30	23	0.3	28	20 800	32 500	18 000
22	34	25	0.3	32	29 100	36 800	18 000
22	34	25	0.3	32	37 900	57 800	7 000

D

NA  
TAFI  
TRI  
BRI